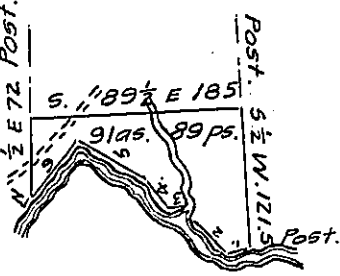


C-68-173
Saml Rhoads.

Seth Jewell.



Wm. Mc. Claran.

Courses & distances up
Sandy Creek from post.

- No. 1. S. 77. W. 19.
- " 2. N. 43. W. 56.
- " 3. N. 82. W. 11.
- " 4. N. 36. W. 30
- " 5. N. 60. W. 73
- " 6. S. 37. W. 60 to post

Draft of a tract of land situate in French creek township, Venango county, west of the Allegheny River, and North of and adjoining Sandy Creek, including the mouth of the North branch thereof. Surveyed 6th November 1833, for David Temple, on improvement & settlement

I hereby certify the above to be a correct copy of an original entry in the Survey Books of Venango County

In witness whereof I have hereunto set my hand this 25th day of April 1846.

Chas. H. Heydrick D.S.

To John Laporte Esqr. Sur. Gen.

IN TESTIMONY that the above is a copy of the original remaining on file in the Department of Internal Affairs of Pennsylvania, made conformably to an Act of Assembly approved the 16th day of February 1833, I have hereunto set my hand and caused the Seal of said Department to be affixed at Harrisburg, this third day of April 1907

Loach P. Brown
Secretary of Internal Affairs.